

Loader Upgrade Instruction

Step 1 : Making DP-306A Firmware System Upgrade disc

- 8x6q.zip is an image file which needs Nero to create the upgrade disc.
- Please decompress 8x6q.zip and extract as 8x6q.nrg. Then use Nero burning tools to create a system upgrade disc.

Step 2 : Power up

- Please turn on the power of DVD player
-



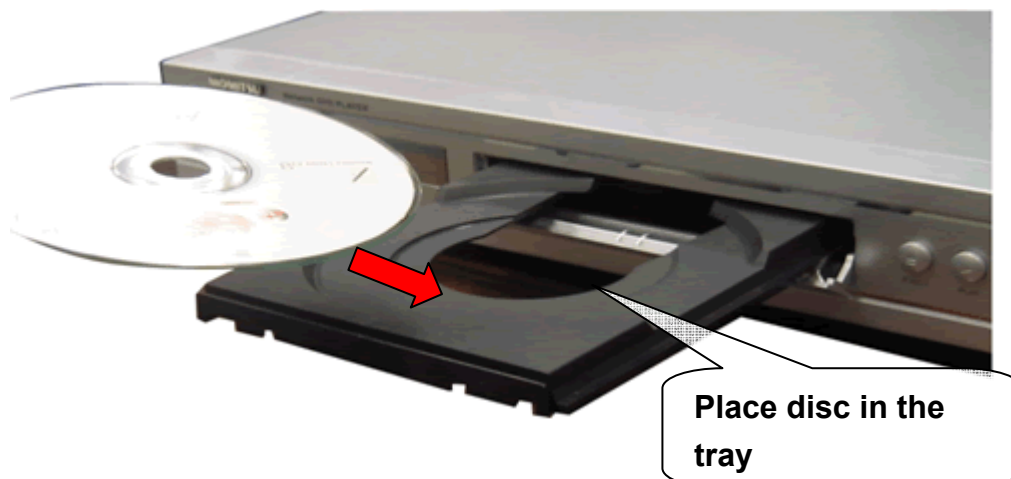
Step 3 : Ejecting the tray

- Press **EJECT** button to open the tray



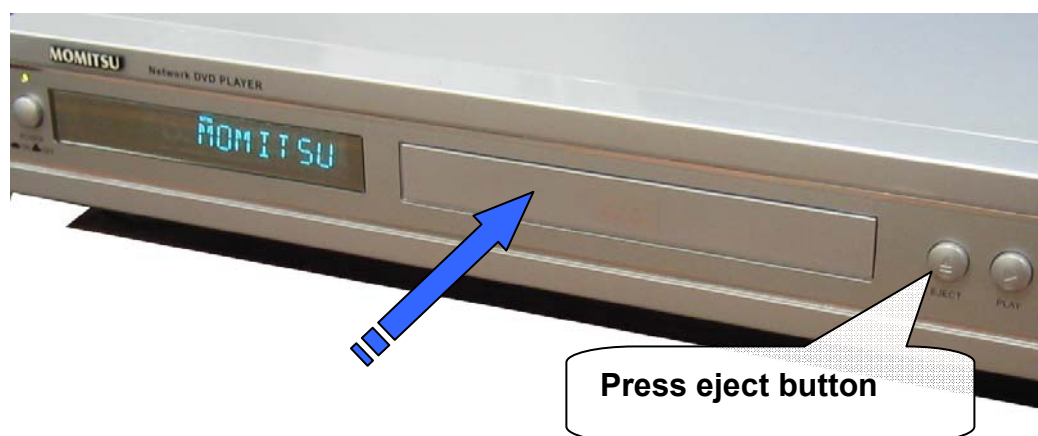
Step 4: Placing firmware system upgrade disc in the tray

- Please insert the firmware system update disc (made in Step 1) into the tray



Step 5 : Tray In

- Press EJECT button again to close the tray.



Step 6 : Reading the disc

- Loader will start to read the disc automatically

Step 7 : Tray Open

Attention: The Tray will open automatically when it finishes reading.
Please remove the disc when tray is opened.

DO NOT DISCONNECT THE POWER AT THIS TIME!

Leave the tray in open position for 5- 7 seconds while the system is updating. Do not close the tray yourself.



Step 8 : Tray Close

- After 5-7 seconds, the tray will close automatically by itself. Do not close the tray yourself, let the tray do it itself. After the tray is closed, the firmware is now successfully updated.
- Unplug the power cable and reconnect it to power up the player.
- After the player is powered up again, upgrade is now complete.



Note: If the tray didn't open or close automatically, the disc version might be incorrect or the upgrade is failed. Please repeat from Step 1.

Step 9 : Checking if firmware updated is successful

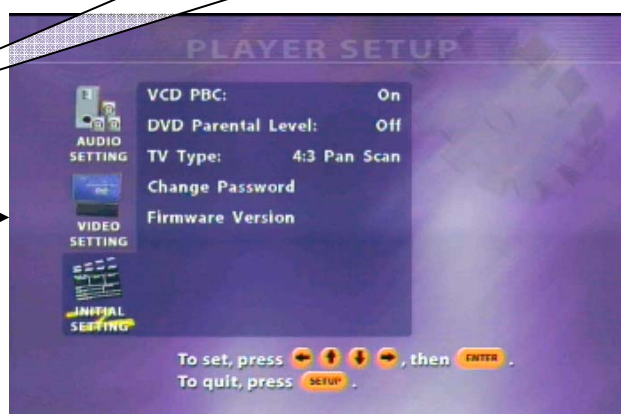
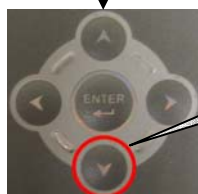
- 1). In V880 opening page, press **“setup”** button on the remote control to enter setup menu screen.
- 2). Press **“↓”** twice to choose **“INITIAL SETTING”**



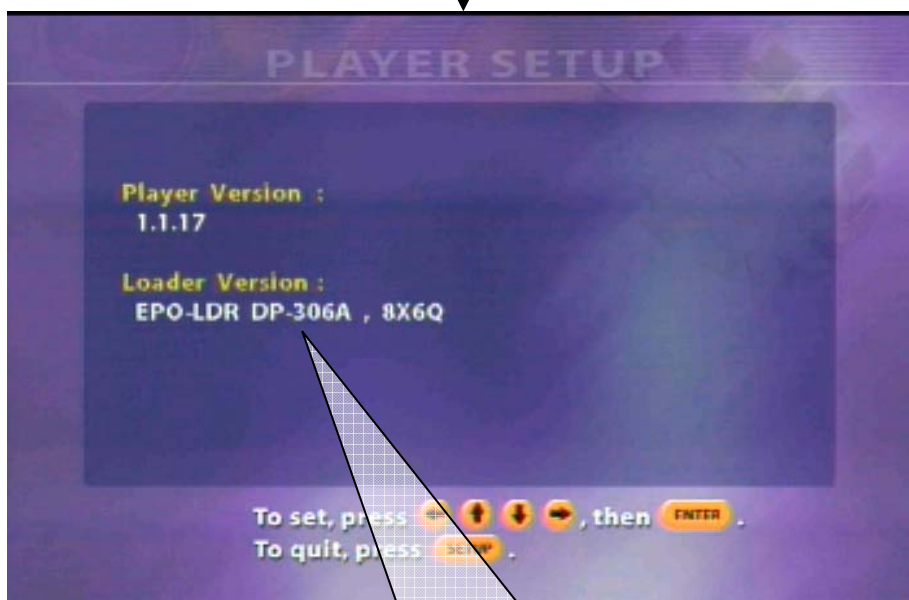
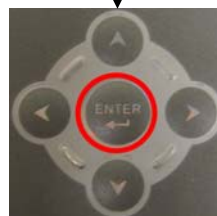
In V880DX opening page, press **“setup”** on the remote control to enter setup menu



Press **“↓”** twice to select **“INITIAL SETTING”**



3). Select **“Firmware Version”** , press enter to display firmware version



If your loader is been updated successfully, the Loader Version will display **EPO-LDR DP-306A , 8X6Q**